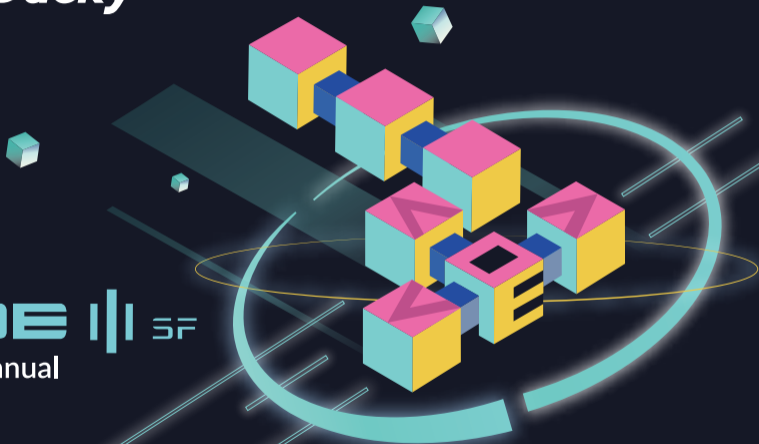




ONE ||| SF
User Manual



目錄

Ducky One 3 SF 規格與特色	1
標準層鍵盤配置圖	2
Fn 層鍵盤配置圖	3
Fn+Alt層鍵盤配置圖	4
RGB 燈光操作模式	5
RGB 記憶區域背光	6
多媒體功能	8
設定 Debounce Time	8
店家櫥窗Display模式	9
回復出廠設定	10
Windows Lock功能	10
鍵位切換操作	11
DIP指撥開關功能	12
Ducky SF Macro	13
Ducky SF Macro 基本快捷鍵功能	14
Ducky SF Macro 設定區域的範圍	15
Ducky SF Macro 指定「多媒體鍵功能」設定輸入指令	16
Ducky SF Macro 指定「鍵盤按鍵功能」設定輸入指令	17
Ducky SF Macro Windows 常見功能快捷鍵	18
Ducky SF Macro 使用範例	19
熱插拔使用說明	20
免責聲明	21

Content

Ducky One 3 SF Specs & Features	22
Standard Layer Keyboard Configuration Diagram	23
Fn Layer Keyboard Configuration Diagram	24
Fn+Alt Layer Keyboard Configuration Diagram	25
RGB Backlit Modes	27
RGB Zone Customization Modes	27
Multimedia Function	28
Debounce Time Setting	29
Display Mode	29
Reset to Factory Defaults	30
Windows Key Lock Feature	31
Key Switch Functions	32
DIP Switch Functions	33
Ducky SF Macro	34
Ducky SF Macro Hotkeys Function	35
Ducky SF Macro Setting Section	36
Ducky SF Macro Multimedia Function Keys	37
Ducky SF Macro Keyboard Button Function Keys	38
Ducky SF Macro Windows Common Function Keys	39
Ducky SF Macro Set-up Example	40
Hot-swap	41
Disclaimers	42



Ducky One 3 SF

Ducky One 3 SF 重點特色：

產品規格：

- 🟢 結構：機械式結構
- 🟢 燈光：RGB
- 🟢 鍵帽材質：PBT 或 ABS
- 🟢 印字技術：二色成型或雷雕
- 🟢 產地：台灣
- 🟢 尺寸：335 x 110 x 40 mm
- 🟢 重量：700g

重點特色：

- 🟢 軸體熱插拔，靈活使用相容大多數軸體
- 🟢 RGB多種燈光效果設定
- 🟢 真正支援Type-C介面，支援任何Type-C設備
- 🟢 提供滑鼠動作功能，雙手不離開鍵盤也能操作
- 🟢 小鍵盤可以送出全鍵盤的訊號，節省空間易攜帶
- 🟢 提供硬體Macro設定，想要什麼功能自行設定
- 🟢 搭配PBT二色成形鍵帽字形完美，不用擔心掉字



Ducky One 3 SF

鍵盤配置圖，以美規為範例

標準層

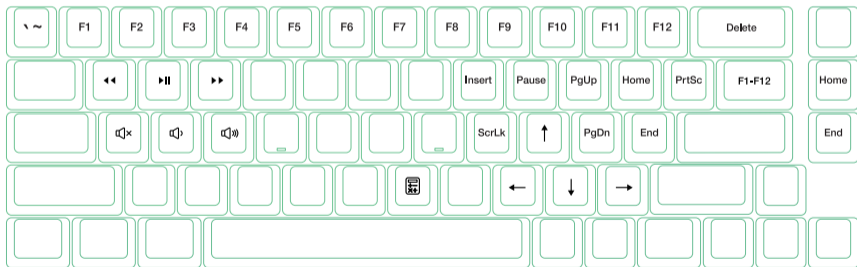




Ducky One 3 SF

鍵盤配置圖，以美規為範例

Fn層

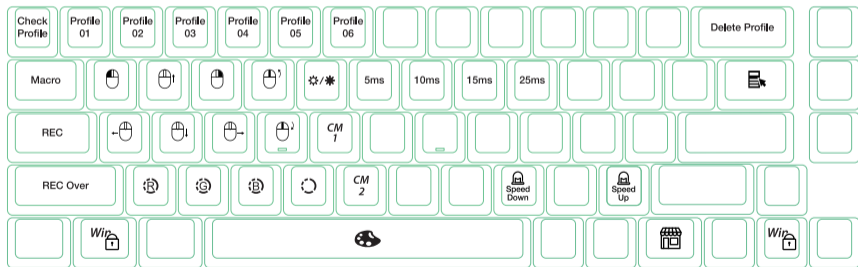




Ducky One 3 SF

鍵盤配置圖，以美規為範例


Fn + Alt層





RGB燈光操作模式

Fn + Alt + T	第一次：波浪模式（預設）	⚙️ 第七次：光暈模式（可設定顏色）
	第二次：循環變色模式	⚙️ 第八次：單色呼吸模式（可設定顏色）
	第三次：雨滴模式	⚙️ 第九次：100%全亮模式（可設定顏色）
	第四次：圓形漣漪模式	⚙️ 第十次：雷達模式（可設定顏色）
	第五次：隨機單點亮模式	第十一次：關閉所有燈光效果
	⚙️ 第六次：單點亮（可設定顏色）	

- 以上各種模式，皆可透過下列操作來進行細節調整：
 - ◆ Fn + Alt + ,：降低速度。
 - ◆ Fn + Alt + /：增加速度。
 - Fn + Alt + T 按住3秒鐘，可以關閉所有燈光效果（含CM1、CM2）。
 - 有 ⚙️ 符號的模式可透過下列操作來進行細節調整：
 - ◆ Fn + Alt + Z：調整紅色（R）亮度，10階。
 - ◆ Fn + Alt + X：調整綠色（G）亮度，10階。
 - ◆ Fn + Alt + C：調整藍色（B）亮度，10階。
 - ◆ Fn + Alt + V：清除紅色、綠色、藍色的顏色設定值。
 - ◆ Fn + Alt + 空白鍵（調色盤）：開啟調色盤顯示各種不同顏色，只要點選想要的顏色即完成顏色設定。
- 



RGB 記憶區域背光

Fn + Alt + G	CM1依序有不同動作：第1段：依玩家設定的區域顯示背光。 第2段：依玩家設定的區域進行呼吸。 第3段：OFF 關閉 CM1。
Fn + Alt + B	CM2依序有不同動作：第1段：依玩家設定的區域顯示背光。 第2段：依玩家設定的區域進行呼吸。 第3段：OFF 關閉 CM2。
Fn + Alt + Caps Lock (REC)	按住3秒後，亮起按鍵 G (CM1)、B (CM2)，挑選要設定的按下即可開始錄製。
Caps Lock + Z	調整紅色 (Red) 燈光顏色，有10階。
Caps Lock + X	調整綠色 (Green) 燈光顏色，有10階。
Caps Lock + C	調整藍色 (Blue) 燈光顏色，有10階。
Caps Lock + V	清除所有燈光。
Caps Lock + 空白鍵	開啟調色盤。
Caps Lock + 左Shift	REC over，完成錄製。



RGB 記憶區域背光

操作過程

- 操作重點提示：先調整喜歡的燈色，再選擇要指定的按鍵。

1. 按住 Fn + Alt + Caps Lock 達3秒後，將亮起按鍵 G（CM1）、B（CM2），按下G為設定 CM1，若按下B則是設定 CM2。
2. 當進入錄製模式後，Caps Lock 鍵會顯示當前要設定的顏色，可以透過 Caps Lock + Z / X / C / V 調整顯示燈色。當有喜歡的顏色出現時，直接在鍵盤上按下任意鍵，該鍵就會儲存成喜歡的顏色。
3. 使用者可以重覆上一個步驟，讓鍵盤在同一組區域背光設定中，不同按鍵能擁有多種不同燈色。若該鍵已被設定亮起，再按一下可取消該鍵的設定值。
4. 當完成錄製後，按下 Caps Lock + 左Shift鍵（REC over），結束錄製。此時 Caps Lock 按鍵指示的顏色，會變成 Caps Lock 按鍵的設定值。

註：

- 當進入錄製模式後，Caps Lock 顯示當前要設定的顯示顏色。
- CM1、CM2 可以與其他燈光模式並存，CM1 優先權較高（CM1 > CM2），分別控制個別區塊。若要一次關閉全部背光效果，只要按住 Fn + Alt + T 按住3秒鐘即可。
- 錄製30秒無動作，不儲存後自動關閉。
- Caps Lock 顏色定義與「單色背光模式」相同。



多媒體功能

Fn + W	滑鼠游標向上	Fn + Q	滑鼠左鍵
Fn + A	滑鼠游標向左	Fn + E	滑鼠右鍵
Fn + S	滑鼠游標向下	Fn + R	滾輪向上
Fn + D	滑鼠游標向右	Fn + F	滾輪向下



設定 Debounce Time

5ms	Fn + Alt + Y	按住3秒後，全鍵盤閃3下代表切換完成
10ms (預設值)	Fn + Alt + U	
15ms	Fn + Alt + I	
25ms	Fn + Alt + O	

註：

此為調整機械軸內金屬彈片在按壓過程中，接觸的反彈跳時間。時間越短能越早觸發，但過短有可能造成連點誤判。如果非必要，以原始的預設值即可。



店家櫥窗Display模式，用以展示燈光模式

Fn + Alt(右) + Ctrl(右) 達3秒

開啟 / 關閉展示多種背光模式

- 循環使用各種 RGB 模式時，鍵盤將會無法使用。
- 拔除電源以退出燈光展示模式。





回復出廠設定

美規、歐規

左Windows鍵 + 方向鍵 ↓ 鍵

註：

壓住3秒後，鍵盤或指示燈會閃3下表示回復。



開啟 / 關閉 Windows 鍵功能

Fn + 任一Alt + 任一Windows鍵

註：

壓住3秒後，全鍵盤會閃3下表示切換完成（預設為開啟Windows鍵功能）。



鍵位切換操作

鍵位切換功能

1. 適用按鍵: Fn/Alt/Ctrl/Windows/Caps lock鍵

2. 操作方式:

- 按住Fn + Alt + k達5秒，ESC、左Ctrl、左Win鍵、左Alt、右Alt、Fn、右Ctrl及Caps lock鍵皆會亮起，燈色分別為粉、紅、橙、黃、綠、藍、紫、白。
- 除Capslock鍵之外，其餘6個按鍵只要同時或依序按下任意2顆，即可交換其鍵位。(燈色也會跟著交換)
- 按1下後Caps lock鍵將改變其功能，順序為Caps lock(白燈) -> Fn(藍燈) -> 左Ctrl(紅燈)依序循環。(Caps lock會依據功能來亮燈)
- 再次按下Caps lock以恢復Caps lock。
- 更改完成後按Esc鍵1下結束切換。

註: 尚未做鍵位切換前，可按Esc鍵1下離開此功能。





DIP 指撥開關功能

DIP 指撥開關功能

DIP1	OFF (預設)	ON
	關閉F1~F12功能切換 (FN+\)	開啟F1~F12功能切換 (FN+\)
DIP2	OFF (預設)	ON
	任意全鍵輸出	任意6鍵輸出
DIP3	OFF (預設)	ON
	Ducky VID	可自定VID
DIP4	OFF (預設)	ON
	—	—

註: 切換每1次DIP的On與Off, 鍵盤就必須重新插拔, 功能才會生效。



Ducky One 3 SF

Step1. 選取要錄製的Profile

Fn + Alt +	1	=	切換至第1組設定	原始鍵盤功能（預設值）
	2		切換至第2組設定	可自定義按鍵Macro功能
	3		切換至第3組設定	
	4		切換至第4組設定	
	5		切換至第5組設定	
	6		切換至第6組設定	

註：

- 當鍵盤插入時，Caps Lock與數字鍵會閃爍Profile數值。
- 請先將設定檔切換至Profile 2~6，才可進行Macro設定。
- 切換完後，Caps Lock或指示燈會閃爍該設定值數字的次數。

Step2. 進入錄製模式

按住 Fn + Alt + Tab 3 秒進入錄製模式，進入後 Caps Lock 或指示燈會慢速閃爍。

Step3. 按下按鍵

按下想要錄製的按鍵，按下後該按鍵會亮起（非背光版本則不會），Caps Lock 或指示燈會快速閃爍。

Step4. 輸入想要的按鍵設定

輸入想要設定的按鍵功能、Macro 執行情形、Macro時間間隔或是多媒體功能鍵。

Step5. 錄製其他按鍵（跳出當前錄製的按鍵）

按下 Fn + Alt，結束錄製當前按鍵，回到設定檔並可繼續選擇錄製其他按鍵。

Step6. 結束錄製

按下 Fn + Alt + Tab 達1秒，結束錄製並回到鍵盤層。



Ducky One 3 SF Macro

基本快捷鍵功能

Fn + Alt +	Tab	按住達3秒後，可開始錄製Macro 按住達1秒，則結束錄製Macro
	ESC	指示燈會閃爍當前的Profile值次數
	Backspace	刪除當前Profile值

Fn + Alt

按住達1秒，跳出當前錄製的按鍵，並可選擇其他按鍵繼續錄製Macro



Ducky One 3 SF Macro

設定區域的範圍

Ducky SF Macro可設定之鍵盤層

- 基本層
- Fn層
- Fn + Alt層

Ducky SF Macro不可設定之按鍵

- Fn鍵
- Caps Lock鍵



註：

- 預設支援同時輸出多組Macro，最多可以同時4組。即正在執行第1組Macro時，若按下其他Macro鍵則會同時再輸入第二組Macro。
- 支援同時錄製N顆按鍵，輸出時即同時錄製的N顆按鍵。
- Macro預設輸入會以使用者打字的時間進行記錄儲存



Ducky One 3 SF Macro

指定「多媒體鍵功能」設定輸入指令

Fn + Windows鍵 + 下方按鍵							
A	音量靜音	G	上一首	M	搜尋	S	滑鼠游標向上
B	音量變大	H	計算機	N	上一頁	T	滑鼠游標向下
C	音量變小	I	我的電腦	O	下一頁	U	滑鼠游標向左
D	播放 / 暫停	J	瀏覽器首頁	P	滑鼠左鍵	V	滑鼠游標向右
E	停止	K	郵件	Q	滑鼠右鍵	W	滑鼠滾輪向上捲動
F	下一首	L	多媒體程式	R	滑鼠中鍵	X	滑鼠滾輪向下捲動

註：需錄製後才可使用。



Ducky One 3 SF Macro

指定「鍵盤按鍵功能」設定輸入指令

Fn + Shift鍵 + 以下按鍵			
A	提示Profile值	N	燈光模式：波浪模式
B	Profile 1	O	燈光模式：循環模式
C	Profile 2	P	燈光模式：雨滴模式
D	Profile 3	Q	燈光模式：漣漪模式
E	Profile 4	R	燈光模式：隨機單點亮模式
F	Profile 5	S	燈光模式：單點亮模式
G	Profile 6	T	燈光模式：100%全亮模式
H	燈光模式切換	U	燈光模式：單色呼吸燈模式
I	調整紅色燈光 / 調整亮度	V	燈光模式：雷達模式
J	調整綠色燈光	W	燈光模式：關閉所有燈光效果
K	調整藍色燈光	X	數字鍵區「.」
L	清空燈光設定值	Y	Number Lock
M	調色盤		

註：需錄製後才可使用



Ducky One 3 SF Macro

Windows 常見功能快捷鍵

Ctrl + C	複製選取的項目	Windows鍵 + D	顯示桌面
Ctrl + X	剪下選取的項目	Windows鍵 + M	將所有視窗最小化
Ctrl + V	貼上選取的項目	Windows鍵 + L	鎖定電腦或切換使用者
Ctrl + Z	復原動作	Windows鍵 + R	開啟 [執行] 對話方塊
Ctrl + Y	重做動作	Windows鍵 + F	搜尋檔案或資料夾
Ctrl + N	建立新文件	Windows鍵 + ↑	最大化視窗
Ctrl + O	開啟現有的文件	Windows鍵 + ↓	最小化視窗
Ctrl + S	儲存文件的變更	Windows鍵 + ←	將視窗最大化到螢幕左側
Ctrl + P	列印文件	Windows鍵 + →	將視窗最大化到螢幕右側
Alt + F4	關閉使用的程式	Windows鍵 + Home	最小化使用中視窗之外的所有視窗

● <http://windows.microsoft.com/en-us/windows/keyboard-shortcuts>



Ducky One 3 SF Macro

使用範例

註：請先將設定檔切換至Profile2~6，才可進行Macro設定。

情境A

想要將Z設定成Q輸出

操作方式：

按住 Fn + Alt + Tab 達3秒鐘 → 按下Z → 按下Q → 按下 Fn + Alt → 按住 Fn + Alt + Tab 達1秒

情境B

在 Windows 系統下，想要按下Z就能顯示桌面

操作方式：

按住 Fn + Alt + Tab 達3秒鐘 → 按下Z → 按住Windows鍵 + D → 按下 Fn + Alt → 按住Fn + Alt + Tab達1秒

情境C

想要將 Fn + Ctrl + M 設定成音量靜音功能

操作方式：

按住 Fn + Alt + Tab 達3秒鐘 → 按下 Fn + Ctrl + M → 按住 Fn + Windows 鍵 + A → 按下 Fn + Alt → 按住 Fn + Alt + Tab 達1秒

情境D

想要將 Fn + Ctrl + Q 指定成單點亮模式輸出

操作方式：

按住 Fn + Alt + Tab 達3秒鐘 → 按下 Fn + Ctrl + Q → 按住 Fn + Shift + S → 按下 Fn + Alt → 按住 Fn + Alt + Tab 達1秒

熱插拔使用說明

使用範例

使用拔鍵器拔出鍵帽



拔軸器將軸拔出



校對針腳與孔位



垂直輕按並定位軸體





Ducky One 3 SF

免責聲明

- 在使用熱插拔型號時，請確保托住熱插拔底座，再將軸體拔起。
軸體插入時請確保不會過度用力而損壞軸體與PCB。
- 鍵盤等硬體設備如因任何液體損壞都將導致保固失效。
- 如有任何的鍵盤改裝都將使保固失效。

保固期為從我們官方供應商購買日起一年 <https://www.duckychannel.com.tw/en/location/global>
任何關於產品的退貨流程等問題，請您聯繫所購買的供應商會協助您處理。



Ducky One 3 SF

Specification :

- 🟢 Type : Mechanical keyboard
- 🟢 LED : RGB color LED
- 🟢 Keycap material : PBT or ABS
- 🟢 Printing method : Double-shot or Laser Engrave
- 🟢 Origin of Production : Taiwan
- 🟢 Size : 335 x 110 x 40 mm
- 🟢 Weight : 700g

Features :

- 🟢 Hot-swappable Kailh sockets
- 🟢 Various RGB LED lighting modes
- 🟢 True USB Type-C interface, compatible with all Type-C devices
- 🟢 Provides mouse functions for a convenient experience
- 🟢 Miniature yet packed with features
- 🟢 Supports Ducky Macro through hardware, personalize functions as you like
- 🟢 Products with PBT Double-shot Seamless keycaps, providing the perfectly exceptional typing experience



Ducky One 3 SF

Keyboard configuration diagram, US layout used as example

Standard Layer

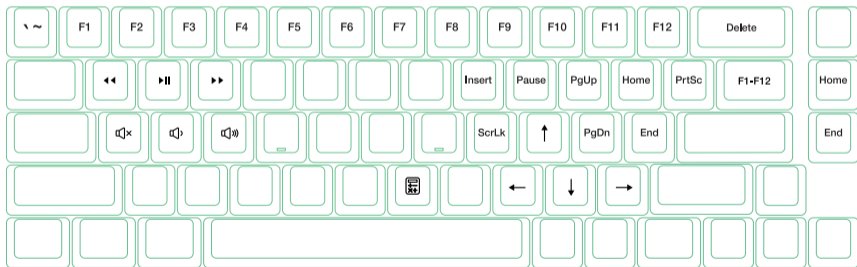




Ducky One 3 SF

Keyboard configuration diagram, US layout used as example

Fn Layer

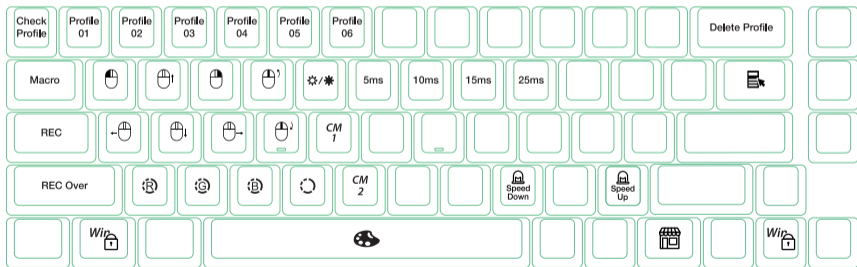




Ducky One 3 SF

Keyboard configuration diagram, US layout used as example

Fn + Alt Layer





RGB Backlit Modes

Fn + Alt + T	First mode: Wave mode (Default)	⚙️ Seventh mode: Halo mode
	Second mode: Color Cycle mode	⚙️ Eighth mode: Breathe mode
	Third mode: Rain Drop mode	⚙️ Ninth mode: 100% Full Backlit mode
	Fourth mode: Ripple mode	⚙️ Tenth mode: Radar mode
	Fifth mode: Rainbow Reactive mode	Eleventh mode: Backlit OFF
	⚙️ Sixth mode: Reactive mode	

- All above modes can be adjusted with the following key sequence:
 - ◆ Fn + Alt + / : Decrease speed
 - ◆ Fn + Alt + , : Increase speed
- Hold Fn + Alt + T for 3 seconds to turn off all backlit (including CM1 and CM2).
- Only the backlit modes with ⚙️ can be adjusted using the following:
 - ◆ Fn + Alt + Z : Adjust color red (R) brightness. 10 Levels.
 - ◆ Fn + Alt + X : Adjust color green (G) brightness. 10 Levels.
 - ◆ Fn + Alt + C : Adjust color blue (B) brightness. 10 Levels.
 - ◆ Fn + Alt + V : Erase red, green and blue color setting.
 - ◆ Fn + Alt + Spacebar (Color palette) : Activate color palette to display various colors on each key, press on the desired color, all the keys will automatically change to match.



RGB LED Zone Customization Modes

Fn + Alt + G	CM1 cycle: First step: Turn on user's customized zone and color. Second step: Turn on user's customized zone and color in breathe mode. Third step: Turn off CM1.
Fn + Alt + B	CM2 cycle: First step: Turn on user's customized zone and color. Second step: Turn on user's customized zone and color in breathe mode. Third step: Turn off CM2.
Fn + Alt + Caps Lock (REC)	Press for 3 seconds until the G (CM1) and B (CM2) keys light up, choose the layer for setting, press it again and start recording.
Caps Lock + Z	Adjust color red (R) , 10 levels.
Caps Lock + X	Adjust color green (G), 10 levels.
Caps Lock + C	Adjust color blue (B), 10 levels.
Caps Lock + V	Erase all LED light
Caps Lock + Spacebar	Color palette
Caps Lock + Left Shift	REC over, finish recording



RGB LED Zone Customization Modes

Recording steps:

- Adjust to the color first, then set the individual keys to be set to that color.

1. Press Fn + Alt + Caps Lock for 3 seconds, the buttons G (CM1) and B (CM2) will illuminate then press G to set CM1 and press B to set CM2.
2. When starting recording mode, Caps Lock will display the current LED color. The color can be adjusted by hitting Caps Lock + Z / X / C / V. After setting the desired color, hitting any key on the keyboard will set that key to the selected color.
3. Repeating the above steps allows the user to set different colors to different keys. If the key has been set, press again to cancel the setting.
4. To finish recording, press Caps Lock + Left Shift (REC over) to finish recording. The color of the Caps Lock key is the value you set.

Note:

- When starting recording mode, Caps Lock will display the current LED Color.
- CM1 \ CM2 can work with other LED light modes at the same time. CM1 and CM2 can be turned on along with other lighting modes. In addition, CM1 has the priority over CM2 when the zone overlaps. Press Fn + Alt + T for 3 seconds to turn off ALL backlit modes.
- If there is no activity in 30 seconds in the recording mode, the recording session will terminate without saving.
- Caps Lock LED color follows the "100% Full Backlit mode".



Multimedia Function

Fn + W	Mouse cursor up	Fn + Q	Left mouse button
Fn + A	Mouse cursor left	Fn + E	Right mouse button
Fn + S	Mouse cursor down	Fn + R	Roller up
Fn + D	Mouse cursor right	Fn + F	Roller down



Debounce Time Setting

5ms	Fn + Alt + Y	Hold the combine keys for 3 sec, the keyboard will flash 3 times to indicate the debounce time has been switched successfully.
10ms (Default)	Fn + Alt + U	
15ms	Fn + Alt + I	
25ms	Fn + Alt + O	

Note:

The method is to adjust the debounce time of the metal shrapnel in the mechanical shaft during the pressing process. The shorter the time, the sooner it can be triggered, but if the time is too short may cause misjudgement. If it's not necessary to change the time, the default value is recommended.



Display Mode

Hold Fn + R_Alt + R_Ctrl for 3 sec

To display various LED backlight modes

- The entire keyboard will be disabled while cycling through various RGB modes.
- Unplug the keyboard to quit Display Mode.

Note: Used for showcasing purposes.





Reset To Factory Defaults

US ANSI and EU ISO layout	Left Windows key + ↓ key
JP JIS layout	Fn+ Left Windows key

Note:

Hold for 3 seconds. The keyboard's backlight will flash 3 times to indicate the keyboard has been reset.



Enable / Disable Windows Function (Windows Key Lock)

Fn + any Alt key + Left Windows key for 3 seconds, the keyboard's backlit will flash 3 times to indicate the keyboard has been enabled / disabled.



Key Switch Functions

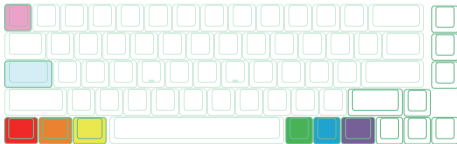
Key Switch Function

1. Applicable keys: Fn/Alt/Ctrl/Windows/Caps lock

2. Operation:

- Press Fn + Alt + k for 5 seconds.
- Until the ESC, L_Ctrl, L_Win, L_Alt, R_Alt, Fn, R_Ctrl, and Caps lock keys are all lighting up. The colorways are respectively pink, red, orange, yellow, green, blue, and purple.
- Except for Caps lock key, the rest of 6 keys are able to switch each function and color at will. (2 keys max at the same time)
- Pressing Caps lock once will change it to FN.
- Pressing Caps lock twice will change it to L-Ctrl.
- Press Esc key once to finish the switching function.
- Press Capslock again to resume Capslock.

Note: You can press Esc key to leave the switching function before starting it.





DIP Switch Functions

DIP switch functions

DIP1	OFF (Default)	ON
	Disable F Row Toggle (FN+\)	Enable F Row Toggle (FN+\)
DIP2	OFF (Default)	ON
	N-Key Rollover mode	6-Key Rollover mode
DIP3	OFF (Default)	ON
	Ducky Vender ID (VID)	Vender ID definable
DIP4	OFF (Default)	ON
	—	—

Note :

You can input the ideal VID in both situation, butthe VID can be only changed when DIP 3 turned on.



Ducky One 3 SF Macro

Step 1. Profile selections

Fn + Alt +	1	=	Switch to profile 1	Factory settings (Default)
	2		Switch to profile 2	Customize Macro key features
	3		Switch to profile 3	
	4		Switch to profile 4	
	5		Switch to profile 5	
	6		Switch to profile 6	

Note:

- When keyboard is plugged in, Caps Lock and Number Keys will blink based on selected profile number.
- Adjust profile to 2~6 in order to set Macro.
- After profile is switched, Caps Lock or Indicator light will blink based on the current profile number.

Step2. To start Macro recording

Press Fn + Alt + Tab for 3 seconds to start Macro recording. Once in recording mode the Caps Lock or indicator lights will flash slowly.

Step3. Press a key to start recording Macro

Press on the key you want to use to activate Macro. The key pressed will blink (Non-backlit version will not) and the Caps Lock or indicator lights will flash swiftly.

Step4. Recording Macro

Enter any key, and choose the Macro implementation and record time option.

Step5. To continue recording another key (Jump out the current recording file)

Press Fn + Alt to choose another key to continue recording.

Step6. Finish recording

Press Fn + Alt + Tab for 1 second to finish recording and back to the profile.



Ducky One 3 SF Macro

Hotkeys Function

Fn + Alt +	Tab	Start recording : Press for 3 seconds. Finish recording: Press for 1 second.
	ESC	Caps Lock will blink in the amount of selected profile number.
	Backspace	Delete current profile value.

Fn + Alt

Press for 1 sec to finish recording the current key and choose another key to record.



Ducky One 3 SF Macro

Setting Section

Ducky SF Macro Configurable Keyboard Layer

- Standard Layer
- Fn Layer
- Fn + Alt Layer

Ducky SF Macro Unsettable Key

- Fn
- Caps Lock



Note:

- The Default supports outputting 4 Macro profiles at most simultaneously. That is, when the first profile is being executed, if the other Macro keys are pressed, the second profile will be input at the same time.
- Support N keys recorded at the same time, and N keys recorded at the same time when outputting.
- Macro function will be based on the user's typing speed and record it.



Ducky One 3 SF Macro

Multimedia Function Keys

Fn + Windows key + Keys below							
A	Mute	G	Previous playlist	M	Search	S	Mouse cursor up
B	Volume up	H	Calculator	N	Previous page	T	Mouse cursor down
C	Volume down	I	My computer	O	Next page	U	Mouse cursor left
D	Play / Pause	J	Browser	P	Mouse left click	V	Mouse cursor right
E	Stop	K	Mail	Q	Mouse right click	W	Mouse scroll up
F	Next playlist	L	Multimedia	R	Mouse middle click	X	Mouse scroll down

Note: Need to be recorded first before use.



Ducky One 3 SF Macro

Keyboard Button Function Keys

Fn + Shift+ Keys below			
A	Prompt profile value	N	Backlit mode : Wave mode (Default)
B	Profile 1	O	Backlit mode : Color Cycle mode
C	Profile 2	P	Backlit mode : Rain Drop mode
D	Profile 3	Q	Backlit mode : Ripple mode
E	Profile 4	R	Backlit mode : Random Reactive mode
F	Profile 5	S	Backlit mode : Reactive mode
G	Profile 6	T	Backlit mode : 100% Full backlit mode
H	Backlit modes switching	U	Backlit mode : Breathe mode
I	Adjust color red	V	Backlit mode : Radar mode
J	Adjust color green	W	Backlit mode : Backlit OFF
K	Adjust color blue	X	The key ". " on number pad (Num_)
L	Erase all value	Y	Number Lock
M	Color palette		

Note: Need to be recorded first before use.



Ducky One 3 SF Macro

Windows Common Function Keys

Ctrl + C	Copy select item	Windows + D	Desktop
Ctrl + X	Cut select item	Windows + M	Minimize all windows
Ctrl + V	Paste select item	Windows + L	Lock computer or change user
Ctrl + Z	Undo	Windows + R	Open [Run] window
Ctrl + Y	Redo	Windows + F	Search files or folders
Ctrl + N	Open new file	Windows + ↑	Maximize all windows
Ctrl + O	Open current file	Windows+ ↓	Minimize windows
Ctrl + S	Save file change	Windows + ←	Maximize window to the left side
Ctrl + P	Print file	Windows + →	Maximize window to the right side
Alt + F4	Quit the software	Windows + Home	Minimize all windows other than the one used

- <http://windows.microsoft.com/en-us/windows/keyboard-shortcuts>



Ducky One 3 SF Macro

Set Up Example

Note: Set the profile to profile 2~6 before setting Macro.

Example A Configure the key "Z" to "Q" output.

Operation method :

Press Fn + Alt + Tab for 3 seconds → Press Z → Press down Q → Press Fn + Alt → Press Fn + Alt + Tab for 1 second

Example B To set Z as show "desktop" (under Windows system)

Operation method :

Press Fn + Alt + Tab for 3 seconds → Press Z → Press Windows key + D → Press Fn + Alt → Press Fn + Alt + Tab for 1 second

Example C To set Fn + Ctrl + M as "mute volume"

Operation method :

Press Fn + Alt + Tab for 3 seconds → Press Fn + Ctrl + M → Press Fn + Windows key + A → Press Fn + Alt → Press Fn + Alt + Tab for 1 second

Example D To set Fn + Ctrl + Q as "Reactive mode"

Operation method :

Press Fn + Alt + Tab for 3 seconds → Press Fn + Ctrl + Q → Press Fn + Shift + S → Press Fn + Alt → Press Fn + Alt + Tab for 1 second



Hot-swap

Set-up Example

Use key puller to pull out the key caps



Use switch puller to pull out the switches



Align switch pins with the holes



Gently push the switch in





Ducky One 3 SF

DISCLAIMERS

- When using a Hot-swap model, make sure to support the hotswap socket with your finger when inserting the switch to ensure it does not damage the PCB from excessive force.
- Any liquid damage to the keyboard will void warranty.
- Modifications to the keyboard will void warranty.

Warranty is 1 year from date of purchase via our Official Vendors <https://www.duckychannel.com.tw/en/location/global>
Please contact the vendor you purchased from for RMA procedures.







www.duckychannel.com.tw